

# Managed Vendor Partner Program – Resources for Coronavirus Disease (COVID-19)

On March 11, 2020, the World Health Organization (WHO) declared COVID-19 a pandemic. This was followed by the President declaring a national emergency on March 13, 2020. These declarations enable governments both nationally and internationally to collaborate and address the outbreak through policies and procedures. Schools, workplaces, and communities also play a critical role and must combat the spread of the virus at the local level to help support the nation's overall response.

## See How We Can Help

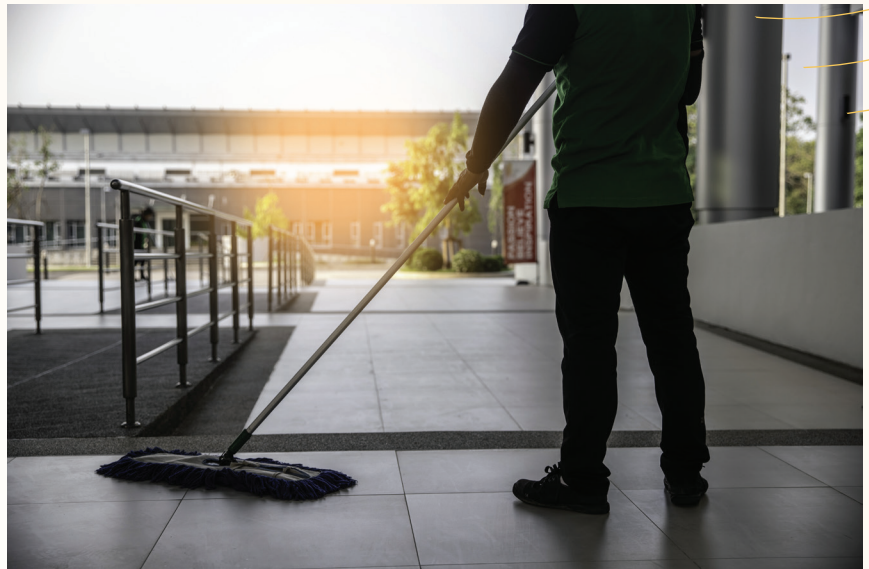
**Dr. Kim Abrego, PT, DPT**  
kabrego@disastersllc.com  
832.499.6597

**Jason Trahan, CPA, CFF, FCPA**  
jtrahan@disastersllc.com  
214.563.7957



**To assist you in your response efforts to COVID-19, DRS can help you:**

- Access industry-leading experts to develop site-specific **preventative** cleaning protocols developed by certified industrial hygienists
- Access industry-leading experts to develop site-specific cleaning protocols developed by certified industrial hygienists for **presumptive / confirmed** cases
- Access nationwide remediation and other resources that can respond quickly to implement developed cleaning protocols in a safe and effective manner
- Access resources to support your supply and equipment needs throughout the duration of your response
- Install temporary facilities for testing and isolation needs
- Track costs associated with your response efforts in the event that reimbursement funding becomes available



**With DRS' assistance, you can avoid:**

- Not providing adequate response support to your organization
- Being unable to access critical response resources due to high demand nationwide
- Not capturing all costs related to your response efforts in the event reimbursement funding becomes available

**See How We Can Help**

**Dr. Kim Abrego, PT, DPT**  
kabrego@disastersllc.com  
832.499.6597

**Jason Trahan, CPA, CFF, FCPA**  
jtrahan@disastersllc.com  
214.563.7957